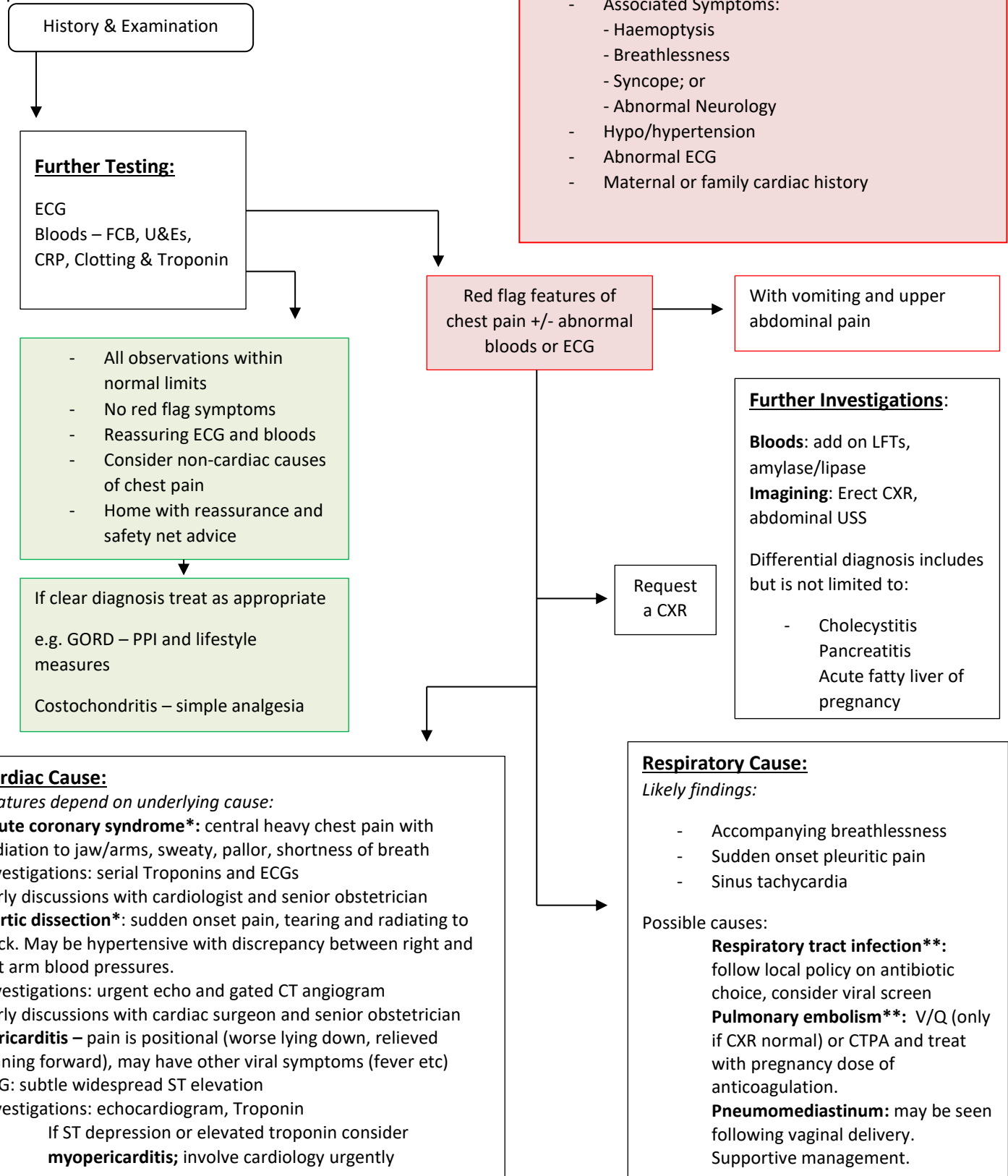


Assessing Chest Pain in Pregnancy

When assessing chest pain, it is important to consider cardiac and non-cardiac causes. Cardiac disease is one of the leading causes of death during pregnancy and more commonly occurs in women without a known cardiac history.

Below is a systematic approach to evaluating chest pain:



* If confirmed discuss with midwife/nurse in charge for a bed with cardiac monitoring immediately

** Consideration of a bed dependent on maternal haemodynamic stability